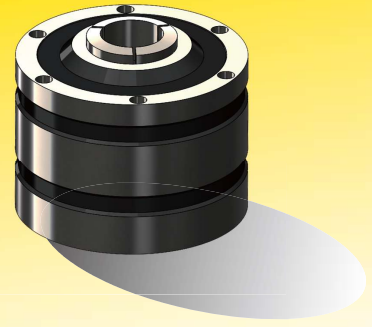


High Precision Chuck

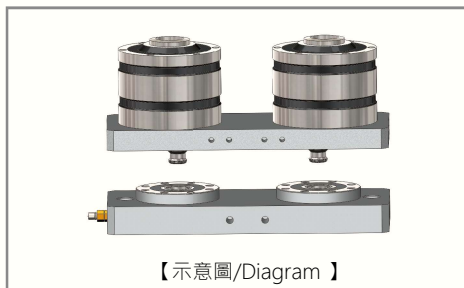
GP 固定式氣壓夾頭

GP-16C PAT. Stationary Chuck

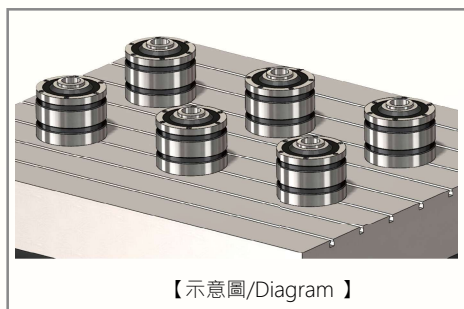


GP大孔徑搭配小體積的設計，顛覆以往笨重的夾頭造型；且後拉式夾持與止擋的運用，增加了高精度的穩定性，使加工設備發揮最大的效益。

Previously the design of chuck was heavy, GP-16C altered it to big bore diameter in small body. Back-pulled clamping and stopping application improve the stability of high precision. It makes machining equipment work the best.



【示意圖/Diagram】



【示意圖/Diagram】

Application:

- Zero-point clamping system
- Drilling machine
- Milling machine

適用範圍:

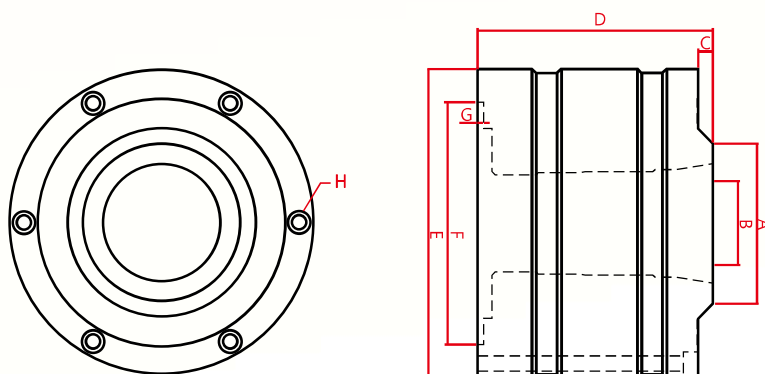
原點定位夾持系統、鑽床、銑床等加工。

GP 產品優勢

- ▲ 前鎖式簡易安裝
- ▲ 有止擋安裝設計
- ▲ 防屑、防切削液
- ▲ 後拉式高精度夾持
- ▲ 夾頭高度極短、外徑極小設計

Features :

- ◆ Front-locked, easy to assemble
- ◆ Stop function design
- ◆ Resistant to chips, dust and cutting fluid
- ◆ Pull back design. High clamping accuracy
- ◆ Stubby and small outside diameter design



型號 Model	GP-16C
A	Φ76
B	Φ40(最大通孔)
C	7
D	112
E	Φ147
F	Φ115
G	3
H	PCDΦ133
筒夾 Collet Type	16C
安裝螺絲 Screw	6H-M6x115
最大氣壓 Max. Air Pressure	10kg/cm ²
夾持力 Clamping Force	5100kgf@7kg/cm ²